

SMF / MCT CALIBRATION TOOL for SMF/M and SMF/L

ASSISTED OPERATIONS

SMF/MCT has been designed to perform high accurate and precise calibration procedures for Argos SMF/M and SMF/L sensors bars

Operator is step by step assisted by system software during the calibration procedures

OPERATIONS LOG

SMF/MCT features an automatic log function for all steps and all commands operated during the calibration procedures

REPORTS

SMF/MCT automatically generates calibration reports

DOCUMENTATION

The system includes System Manual, Operating Manual, Software Manual
Test data report and Calibration Certificates



SMF/MCT is the system designed and manufactured by Argos Ingegneria for easy and accurate calibration of Argos photometric instruments sensor bars.

A full automatic procedure allows the operator to connect to Argos instruments and perform calibration tests using ICAO compatible colors (white, red, blue, green and yellow).

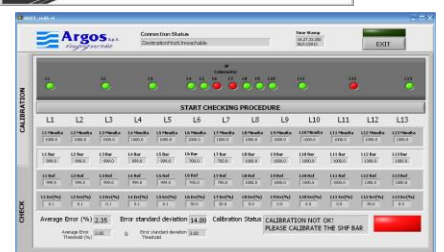
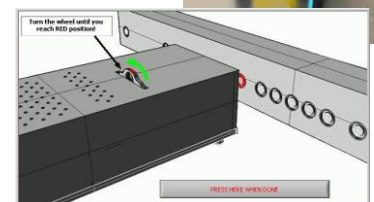
SMF/MCT calibration instrument connects to the sensor bar to upload previous parameters and to download the new ones at the end of the calibration procedure.

SMF/MCT is equipped of a high performance white spot light at 4700K able to supply a 12° beam. A dedicate optic collects the beam and slip it in two separate beams: a reference beam and a calibrating one. The reference beam is monitored by a Minolta reference instrument, while the calibration beam is used for illumination of photometric sensors.

SMF/MCT allows a precise and accurate calibration process. The calibration log is automatically saved for checking calibration operations. Calibration certificates are automatically generated.

SMF/MCT allows to switch between SMF/M and SMF/L for mobile or lab use of the sensing bar.

- Full assisted procedure for SMF/M and SMF/L sensor bar calibration
- High performance 4700 K reference light
- Double beam measurement
- High accuracy Minolta reference instrument
- Proprietary dedicated software
- Calibration overall accuracy $\leq 5\%$
- Calibration not affected by reference light intensity variations
- ICAO colors
- Complete log of operations performed
- Automatic reporting of calibration



Characteristics

TRAINING

A complete training course covers all the installation, operating, reporting and maintenance issues allowing the customer to reach the complete control of the instrument

TECHNICAL SUPPORT

Argos technical support assists customers during the whole system lifetime

EASY

Ready to use instrument for multiple calibrations of the Argos systems sensing bars

Calibration software runs on the same PCs of SMF/Mobile and SMF/Lab

For further information on our products and services please see our website:

www.argosingegneria.com

Via Tiburtina 1166
00156 Roma - Italy
Tel. + 39 06 41 22 10 1
Fax +39 06 4111144
argos@argosingegneria.com



SMF/MCT is composed of a set of hardware components including system software for data acquisition, trigger generation and processing. The system is designed for lab / workshop operations.

SMF/MCT has the capability of generating strobe pulses for acquiring data from the measurement bar under test without the need of any movement.

Specifications

Dimensions	11cm x 11cm x 60 cm
Weight	1.5 kg
Power supply	12 VDC, 110/220AC, 15 Watt
Operating conditions	-10° C + 40° C - RH < 85%
Storage temperature	-20° C + 55° C
Reference Luxmeter power supply	2 AA -size batteries
Reference Luxmeter weight	0.21 kg
Reference Luxmeter accuracy	2%

